

LINE	BEARING	LENGTH	CHORD	DELTA	TANGENT	BEARING
L1	N89°35'05"E	16.68	15.50	1.18	87.55	S73°45'29"E
L2	N89°35'05"E	16.68	15.50	1.18	87.55	S73°45'29"E
L3	N89°35'05"E	16.68	15.50	1.18	87.55	S73°45'29"E
L4	N89°35'05"E	16.68	15.50	1.18	87.55	S73°45'29"E
L5	N89°35'05"E	16.68	15.50	1.18	87.55	S73°45'29"E
L6	N89°35'05"E	16.68	15.50	1.18	87.55	S73°45'29"E
L7	N89°35'05"E	16.68	15.50	1.18	87.55	S73°45'29"E
L8	N89°35'05"E	16.68	15.50	1.18	87.55	S73°45'29"E
L9	N89°35'05"E	16.68	15.50	1.18	87.55	S73°45'29"E
L10	N89°35'05"E	16.68	15.50	1.18	87.55	S73°45'29"E
L11	N89°35'05"E	16.68	15.50	1.18	87.55	S73°45'29"E
L12	N89°35'05"E	16.68	15.50	1.18	87.55	S73°45'29"E
L13	N89°35'05"E	16.68	15.50	1.18	87.55	S73°45'29"E
L14	N89°35'05"E	16.68	15.50	1.18	87.55	S73°45'29"E
L15	N89°35'05"E	16.68	15.50	1.18	87.55	S73°45'29"E
L16	N89°35'05"E	16.68	15.50	1.18	87.55	S73°45'29"E
L17	N89°35'05"E	16.68	15.50	1.18	87.55	S73°45'29"E
L18	N89°35'05"E	16.68	15.50	1.18	87.55	S73°45'29"E
L19	N89°35'05"E	16.68	15.50	1.18	87.55	S73°45'29"E
L20	N89°35'05"E	16.68	15.50	1.18	87.55	S73°45'29"E
L21	N89°35'05"E	16.68	15.50	1.18	87.55	S73°45'29"E
L22	N89°35'05"E	16.68	15.50	1.18	87.55	S73°45'29"E
L23	N89°35'05"E	16.68	15.50	1.18	87.55	S73°45'29"E
L24	N89°35'05"E	16.68	15.50	1.18	87.55	S73°45'29"E
L25	N89°35'05"E	16.68	15.50	1.18	87.55	S73°45'29"E
L26	N89°35'05"E	16.68	15.50	1.18	87.55	S73°45'29"E
L27	N89°35'05"E	16.68	15.50	1.18	87.55	S73°45'29"E
L28	N89°35'05"E	16.68	15.50	1.18	87.55	S73°45'29"E
L29	N89°35'05"E	16.68	15.50	1.18	87.55	S73°45'29"E
L30	N89°35'05"E	16.68	15.50	1.18	87.55	S73°45'29"E
L31	N89°35'05"E	16.68	15.50	1.18	87.55	S73°45'29"E
L32	N89°35'05"E	16.68	15.50	1.18	87.55	S73°45'29"E
L33	N89°35'05"E	16.68	15.50	1.18	87.55	S73°45'29"E
L34	N89°35'05"E	16.68	15.50	1.18	87.55	S73°45'29"E
L35	N89°35'05"E	16.68	15.50	1.18	87.55	S73°45'29"E
L36	N89°35'05"E	16.68	15.50	1.18	87.55	S73°45'29"E
L37	N89°35'05"E	16.68	15.50	1.18	87.55	S73°45'29"E
L38	N89°35'05"E	16.68	15.50	1.18	87.55	S73°45'29"E
L39	N89°35'05"E	16.68	15.50	1.18	87.55	S73°45'29"E
L40	N89°35'05"E	16.68	15.50	1.18	87.55	S73°45'29"E
L41	N89°35'05"E	16.68	15.50	1.18	87.55	S73°45'29"E
L42	N89°35'05"E	16.68	15.50	1.18	87.55	S73°45'29"E
L43	N89°35'05"E	16.68	15.50	1.18	87.55	S73°45'29"E
L44	N89°35'05"E	16.68	15.50	1.18	87.55	S73°45'29"E
L45	N89°35'05"E	16.68	15.50	1.18	87.55	S73°45'29"E
L46	N89°35'05"E	16.68	15.50	1.18	87.55	S73°45'29"E
L47	N89°35'05"E	16.68	15.50	1.18	87.55	S73°45'29"E
L48	N89°35'05"E	16.68	15.50	1.18	87.55	S73°45'29"E
L49	N89°35'05"E	16.68	15.50	1.18	87.55	S73°45'29"E
L50	N89°35'05"E	16.68	15.50	1.18	87.55	S73°45'29"E
L51	N89°35'05"E	16.68	15.50	1.18	87.55	S73°45'29"E
L52	N89°35'05"E	16.68	15.50	1.18	87.55	S73°45'29"E
L53	N89°35'05"E	16.68	15.50	1.18	87.55	S73°45'29"E
L54	N89°35'05"E	16.68	15.50	1.18	87.55	S73°45'29"E
L55	N89°35'05"E	16.68	15.50	1.18	87.55	S73°45'29"E

- REFERENCES:
- PLAT BY E.M. SEABROOK, JR., INC. DATED APRIL 2, 1983; RECORDED IN PLAT BOOK CG, PAGE 91; CHARLESTON COUNTY R.M.C.
 - PLAT BY FORSBERG ENGINEERING & SURVEYING, INC. DATED JANUARY 21, 1986; RECORDED IN PLAT BOOK BK, PAGE 56; CHARLESTON COUNTY R.M.C.
 - PLAT BY FORSBERG ENGINEERING & SURVEYING, INC. DATED DECEMBER 6, 1985; RECORDED IN PLAT BOOK BG, PAGE 78; CHARLESTON COUNTY R.M.C.
 - PLAT BY JOSEPH NEEDLE DATED JUNE 1948; RECORDED IN FILE 2, CHARLESTON COUNTY R.M.C.
 - PLAT BY HOFFMAN LESTER ASSOCIATES, INC. DATED FEBRUARY 8, 1999; RECORDED IN PLAT BOOK ED, PAGE 12; CHARLESTON COUNTY R.M.C.
 - PLAT BY HOFFMAN LESTER ASSOCIATES, INC. DATED AUGUST 18, 1989; RECORDED IN PLAT BOOK ED, PAGE 472; CHARLESTON COUNTY R.M.C.
 - PLAT BY HOFFMAN LESTER ASSOCIATES, INC. DATED MAY 25, 2000 & REVISED JUNE 13, 2000; RECORDED IN PLAT BOOK ED, PAGES 137 & 138; CHARLESTON COUNTY R.M.C.
 - PLAT BY HOFFMAN LESTER ASSOCIATES, INC. DATED JUNE 14, 2001; CHARLESTON COUNTY R.M.C.

7. NEW RIGHTS-OF-WAY AND DRAINAGE EASEMENTS WILL BE MAINTAINED BY THE CITY OF CHARLESTON.

8. PARCELS B, G, J, K, L, M, N, & R WILL BE OWNED AND MAINTAINED BY THE HOMEOWNERS ASSOCIATION.

9. POTABLE WATER SERVICE & SANITARY SEWER SERVICE PROVIDED BY THE CHARLESTON COMMISSIONERS OF PUBLIC WORKS.

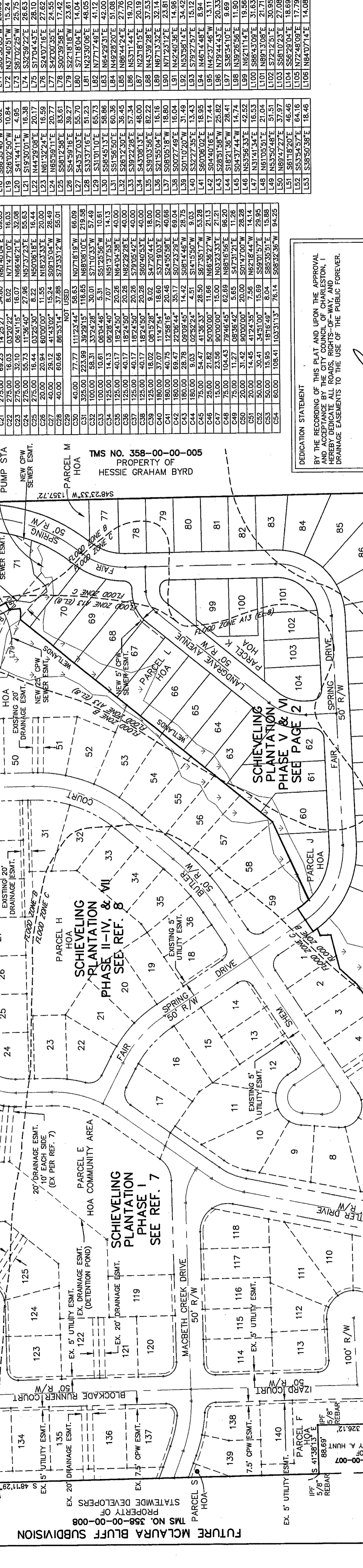
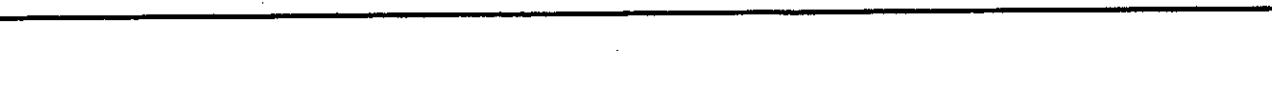
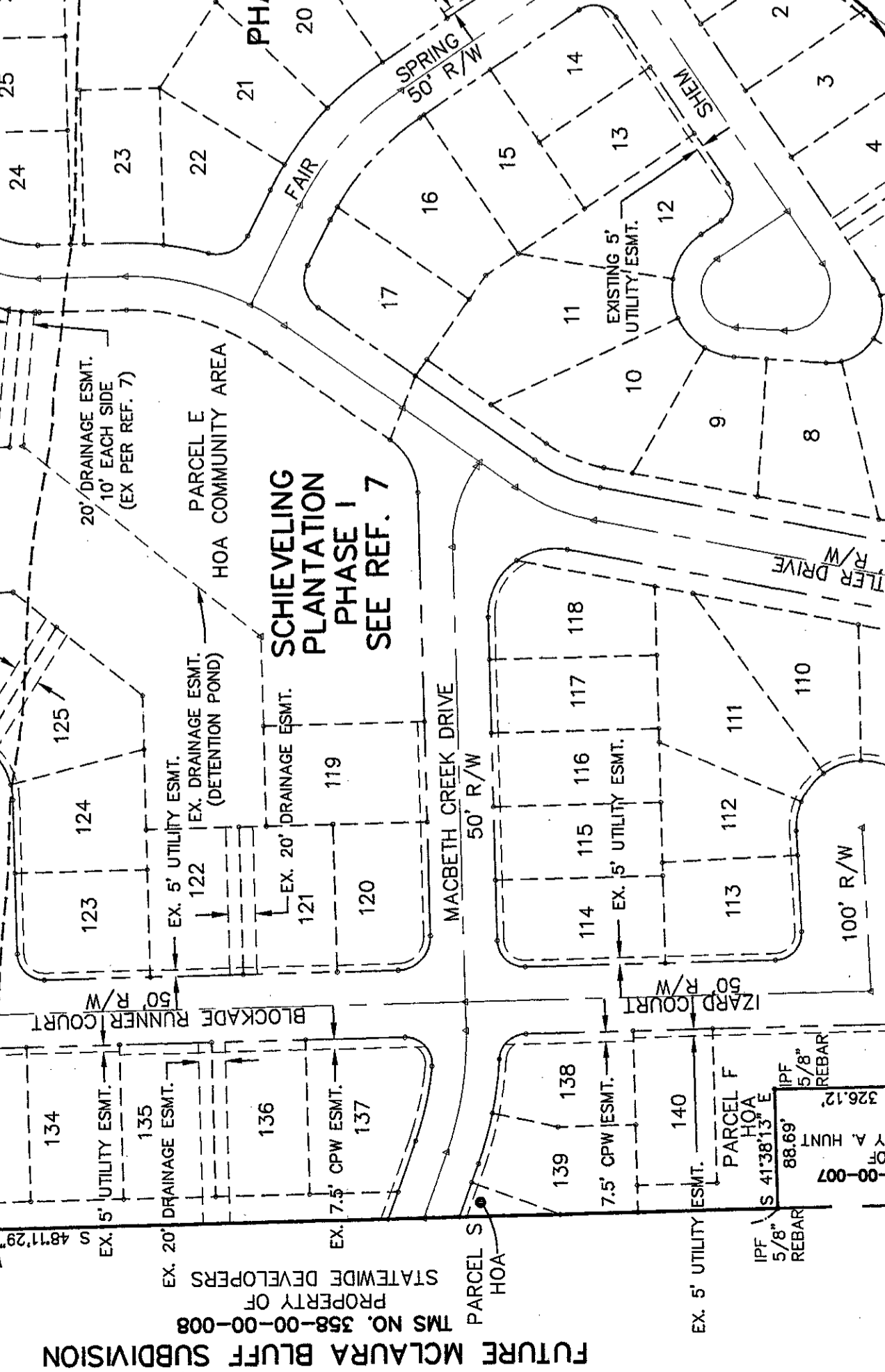
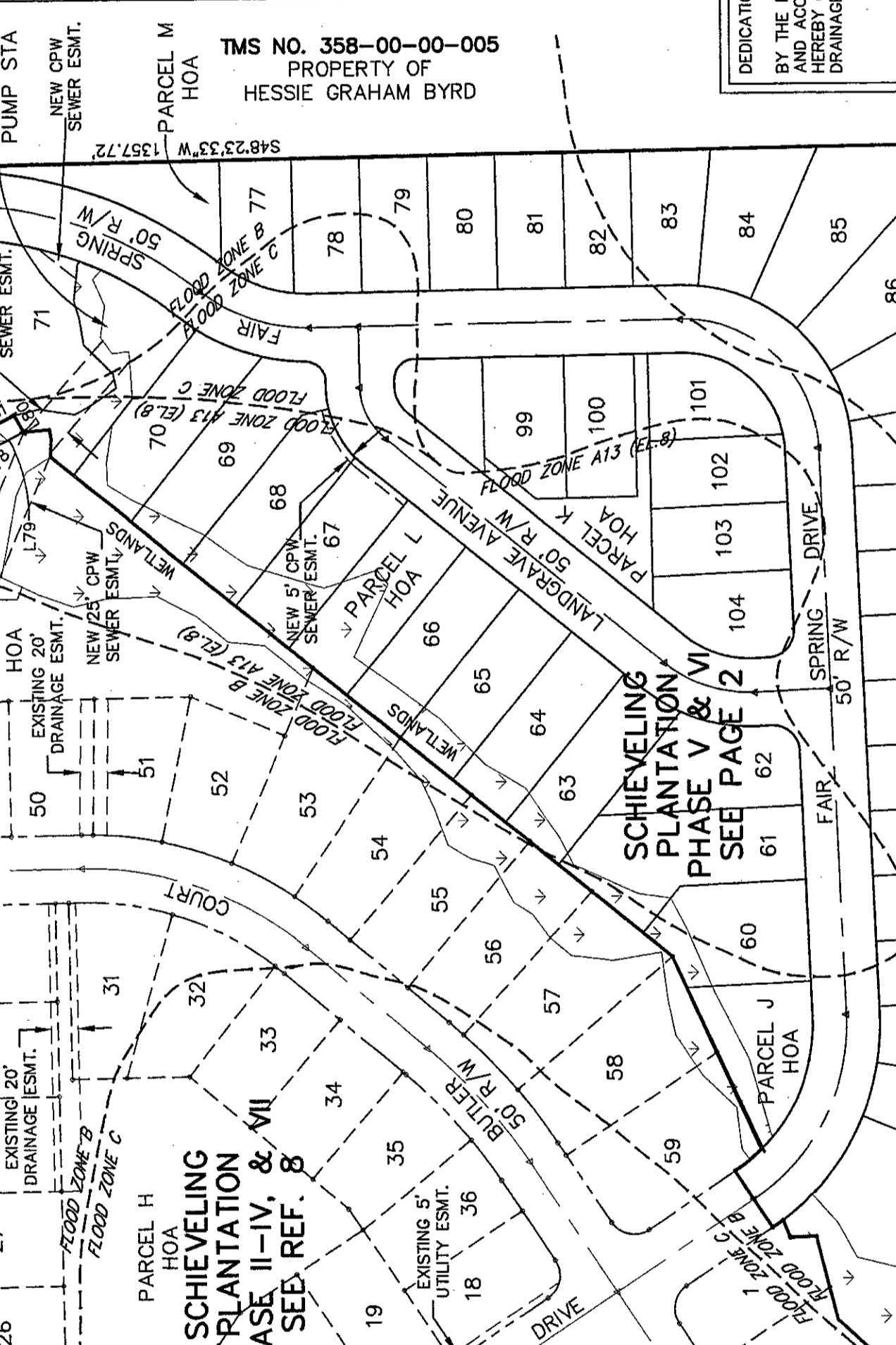
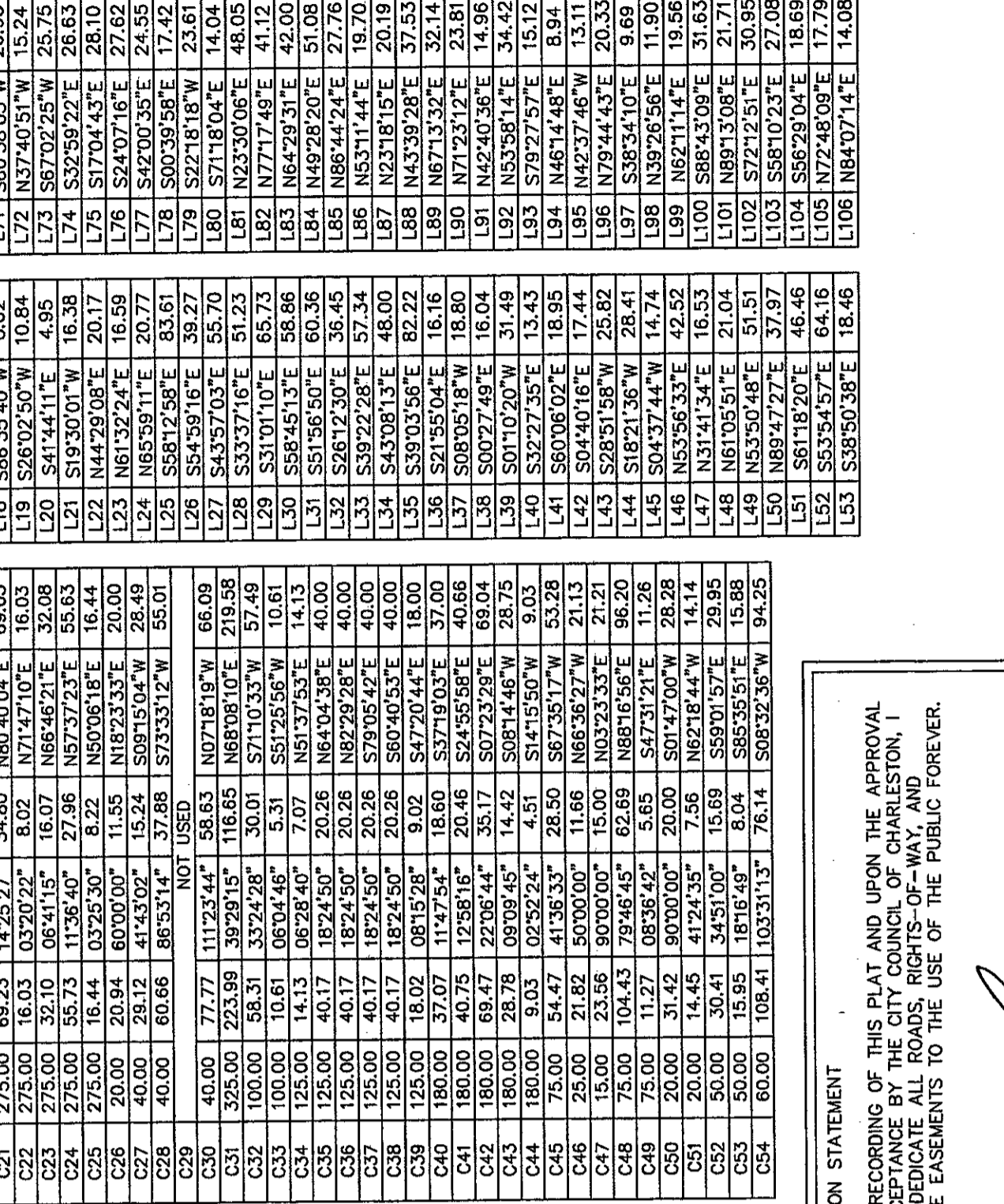
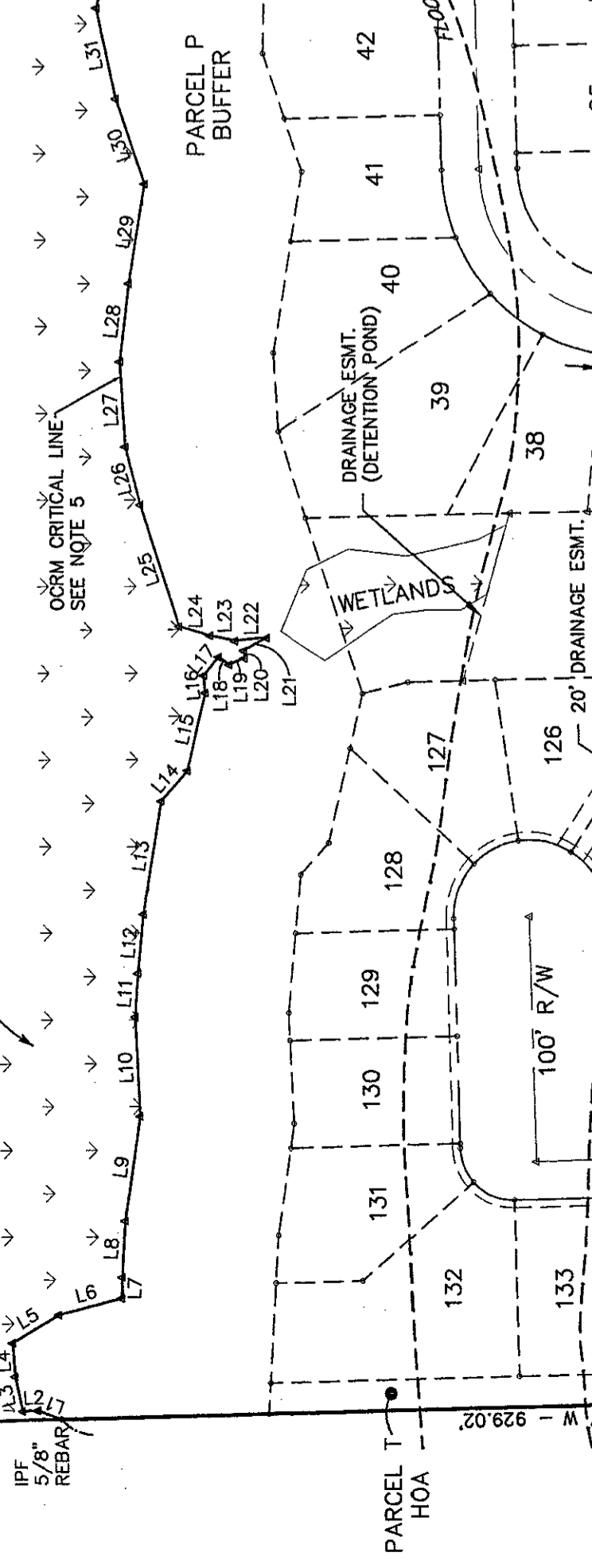
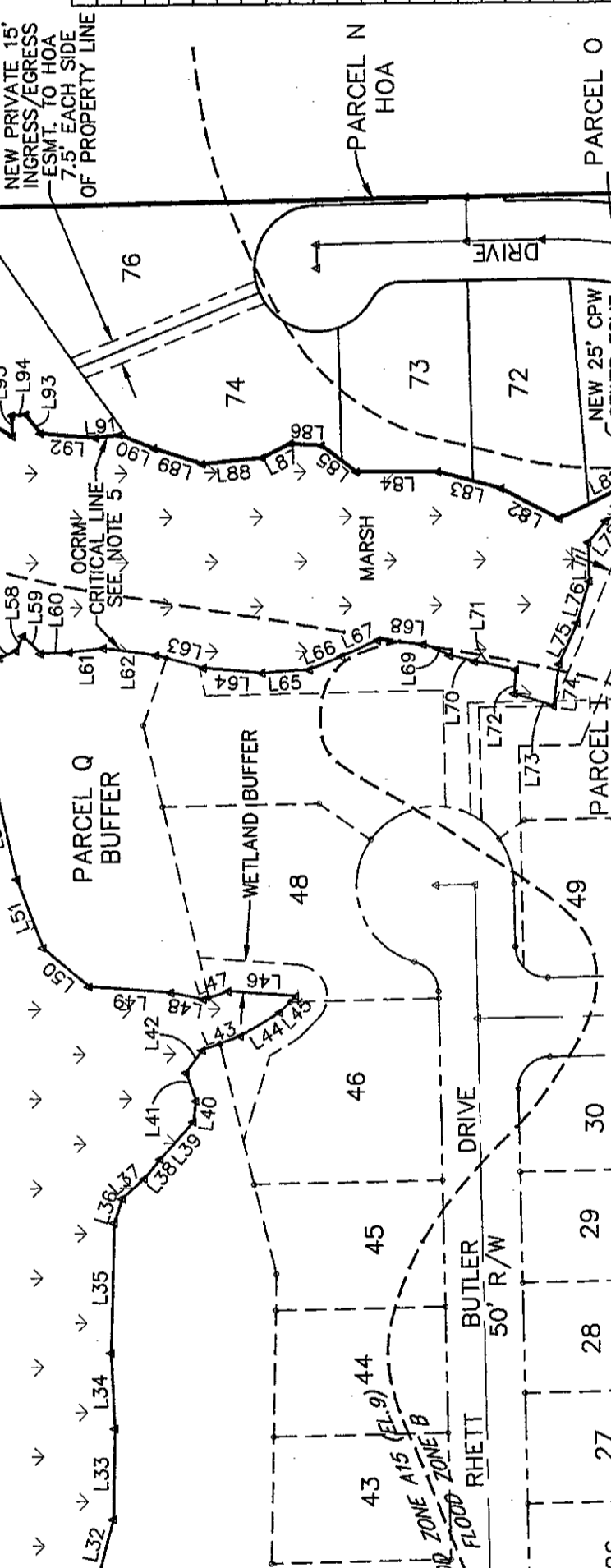
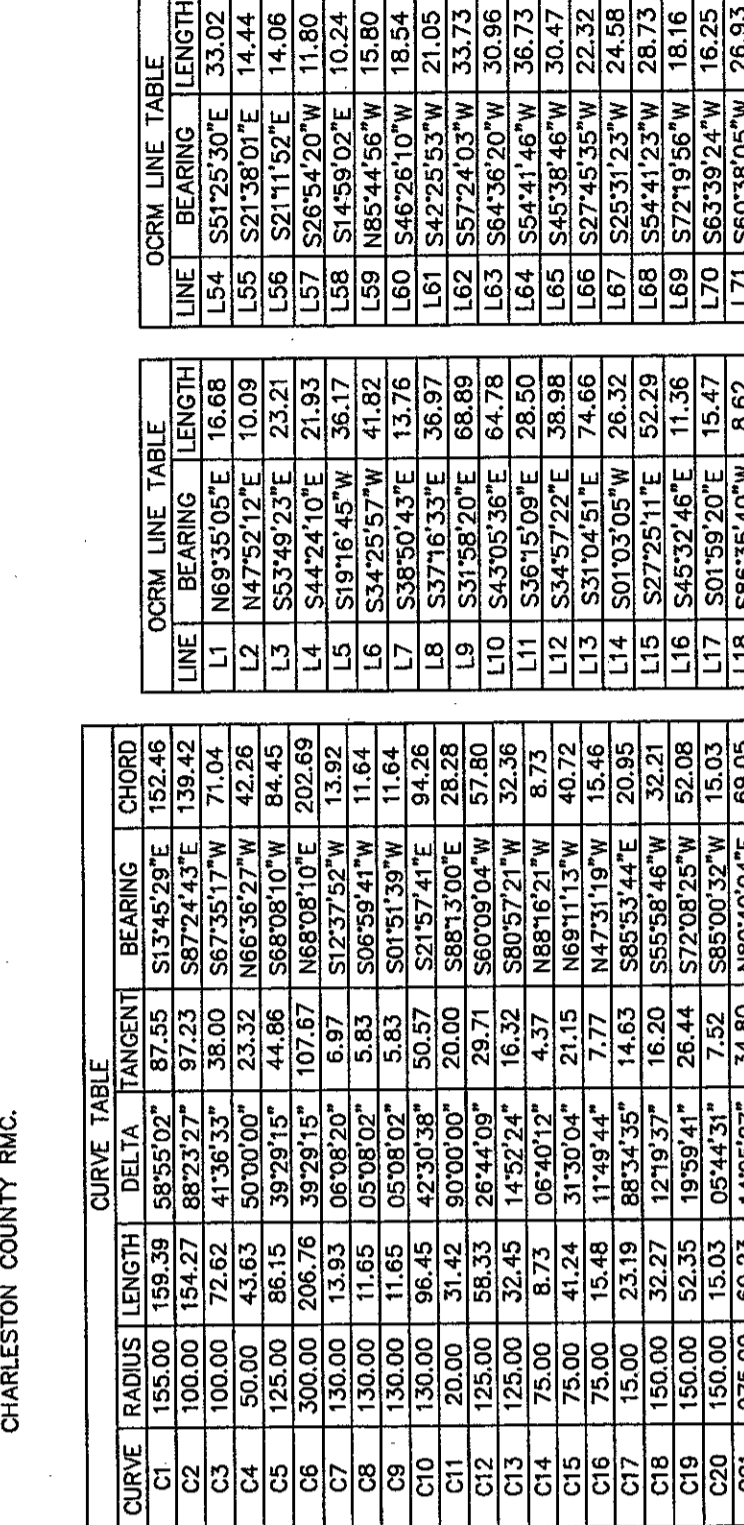
10. 44 TOTAL LOTS 80-98 (4,800 SF EACH) SPLIT INTO 100 LOTS LARGEST: LOT 78 (13,085 SF)

11. THE ARMY CORP OF ENGINEERS HAS JURISDICTION OVER THE FRESHWATER WETLANDS IN PHASES V & VI.

- NOTES:
- CHARLESTON COUNTY MS NO. 358-00-00-006
 - CITY OF CHARLESTON ZONING: P.U.D. (PLANNED UNIT DEVELOPMENT)
 - PROPERTY OWNER: SCHIEVELING PLANTATION DEVELOPMENT, L.L.C.
 - THE PROPERTY IS LOCATED IN FLOOD ZONES C, B, & A13 (EL. 8) AS PER COMMUNITY PANEL 455413 0225 G, DATED JULY 15, 1988, AND COMMUNITY PANEL 455413 0226 G, DATED JULY 15, 1988.
 - OCRM CRITICAL LINE IS SHOWN PER PLAT BY HLA, INC. DATED APRIL 2, 1983; RECORDED IN PLAT BOOK CG, PAGE 91; CHARLESTON COUNTY R.M.C. APPROVED ON JUNE 5, 1989.
 - AREAS WERE DETERMINED BY THE COORDINATE METHOD.

HEREBY STATE THAT TO THE BEST OF MY KNOWLEDGE AND INFORMATION AND BELIEF, THE SURVEY SHOWN HEREON WAS MADE IN ACCORDANCE WITH THE REQUIREMENTS OF THE MINIMUM STANDARDS FOR THE PRACTICE OF LAND SURVEYING IN THE STATE OF SOUTH CAROLINA, AND MEETS OR EXCEEDS THE REQUIREMENTS FOR A CLASS "A" SURVEY AS SPECIFIED THEREIN; ALSO THERE ARE NO VISIBLE ENCROACHMENTS OR PROJECTIONS OTHER THAN SHOWN.

RICHARD D. LACEY S.C.R.S. 16120



DEDICATION STATEMENT

BY THE RECORDING OF THIS PLAT AND UPON THE APPROVAL AND ACCEPTANCE BY THE CITY ENGINEER OF CHARLESTON, I HEREBY DEDICATE TO THE CITY OF CHARLESTON THE DRAINAGE EASEMENTS TO THE USE OF THE PUBLIC FOREVER.

John A. Lamm
CO-MANAGING MEMBER
SCHIEVELING PLANTATION DEVELOPMENT, L.L.C.

LEGEND

- BOUNDARY LINE & CORNER SET (5/8" REBAR)
- BOUNDARY LINE & CORNER SET (AS DESCRIBED)
- ADJACENT PROPERTY LINE
- RIGHT OF WAY LINE
- CENTERLINE
- EASEMENT LINE
- CALCULATED POINT
- CONCRETE MONUMENT FOUND
- MARSH OR WETLAND

SHADOWMOSS PLANTATION SUBDIVISION

ENGINEERING DIVISION
CITY OF CHARLESTON

DATE PLAT APPROVED 3-21-82

APPROVED BY CITY ENGINEER

APPROVED BY: *John A. Lamm*
FOR CITY ENGINEER

REGISTERED MEASURE CONVEYANCE

REGISTERED MEASURE CONVEYANCE

REGISTERED MEASURE CONVEYANCE

DATE: JANUARY 28, 2002 SCALE: 1"=100'

HOFFMAN LESTER ASSOCIATES, INC.

29 LEINBACH DRIVE CHARLESTON, S.C. 29407 (843) 763-1166